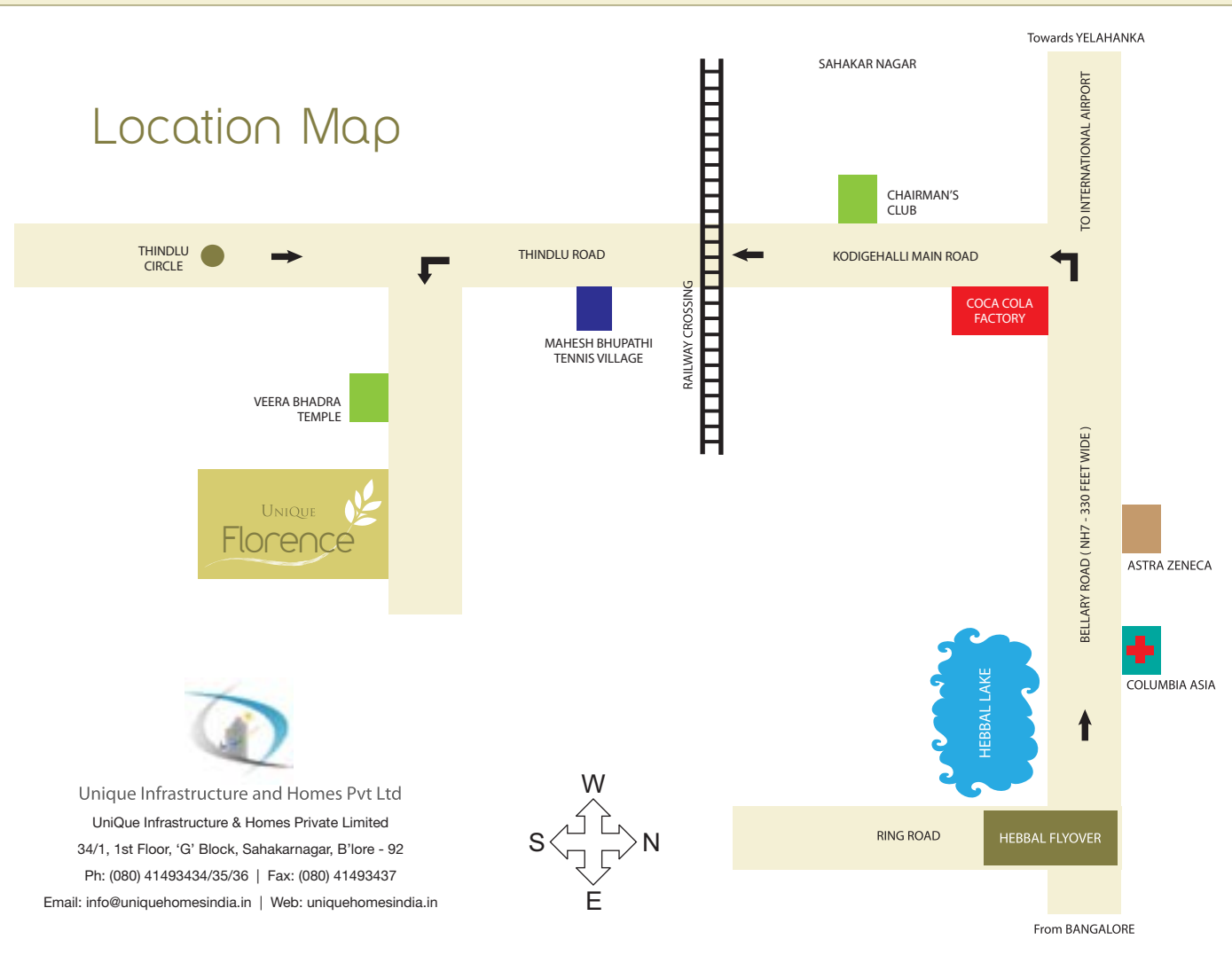




UNIQUE  
Florence

Location Map



Unique Infrastructure and Homes Pvt Ltd  
 UniQue Infrastructure & Homes Private Limited  
 34/1, 1st Floor, 'G' Block, Sahakarnagar, B'lore - 92  
 Ph: (080) 41493434/35/36 | Fax: (080) 41493437  
 Email: info@uniquehomesindia.in | Web: uniquehomesindia.in





## Floor Plans



Unit - 1 | Area : 1304 Sqft



Unit - 2 | Area : 1384 Sqft



Unit - 3 | Area : 1160 Sqft

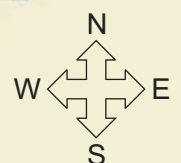
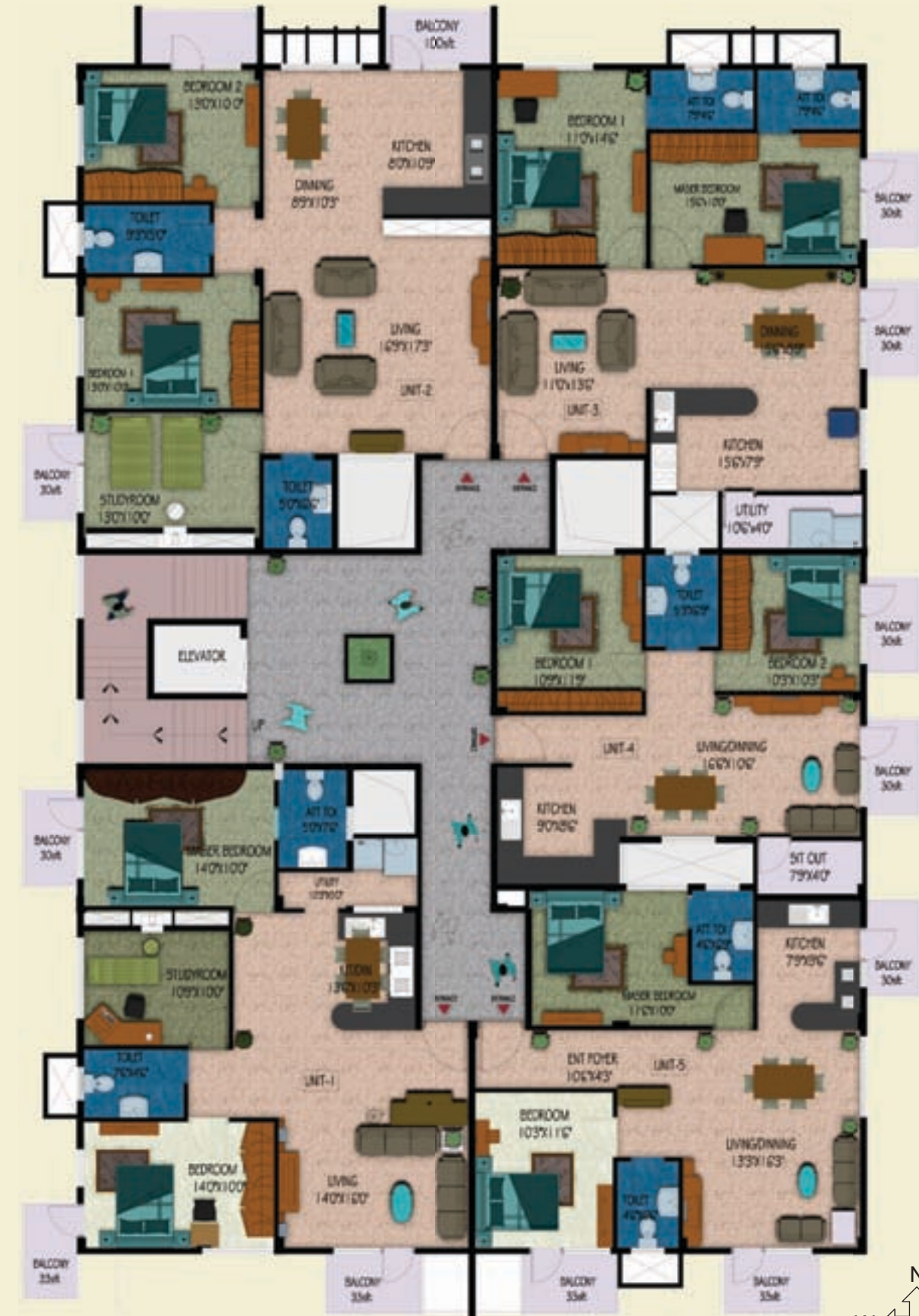


Unit - 4 | Area : 886 Sqft



Unit - 5 | Area : 1026 Sqft

## Typical Floor Plan



Find yourself in the midst of urbanization with your every desire just a hop, skip and jump away. UniQue Homes Infrastructure Private Limited., with its proud heritage, brings to you the contemporary smart home - UniQue Florence. Built on Prime residential land, this project houses 12 premium 2 BHK and 8 premium 3BHK apartments that range from 886 Sqft to 1384 Sqft in area. Florence offers a range of apartment choices that would best suit you and your family. Located after the Hebbal Flyover, just off the International Airport Road, these homes are just 5 km from Sanjay Nagar, Yeshwanthpur and Malleswaram; the latest among the commercial and retail hubs of Bangalore city. These homes are in the vicinity of major companies like Larson & Turbo, Bharat Electronics Ltd., Coca Cola Factory and many more.

Also in the vicinity are various restaurants, retail outlets, famed educational institutions, round the clock medical help, malls and social infrastructure. These apartments are just 20 minutes drive away from the Bangalore International Airport, few minutes away from the Kodigehalli, Yelahanka and Yeshwanthpur Railway Stations; and with access to all your necessary housing amenities you just cannot live without.

UniQue Florence is your ticket to having it all. All the above factors makes this your ideal gateway to escape the pressure of the city, even while staying in it.

With all this and more, UniQue Florence really is the personification of convenience and embodiment of your much wanted modern lifestyle.

Ample space for parking for both 2 & 4 wheelers | Lift access | Intercom facilities | 24 hrs Security