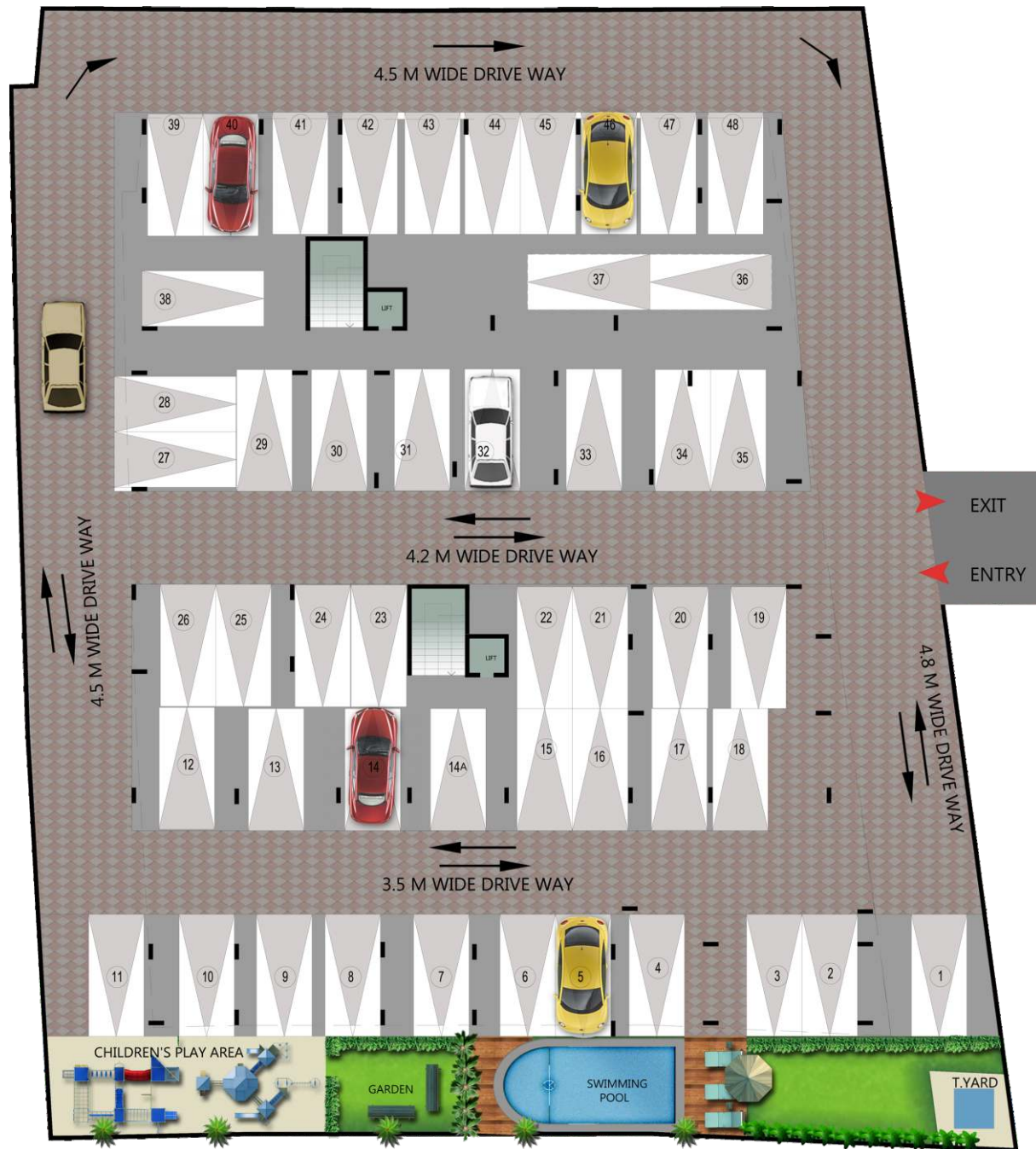


# UNIQUE Eastern Breeze

## Key Plans

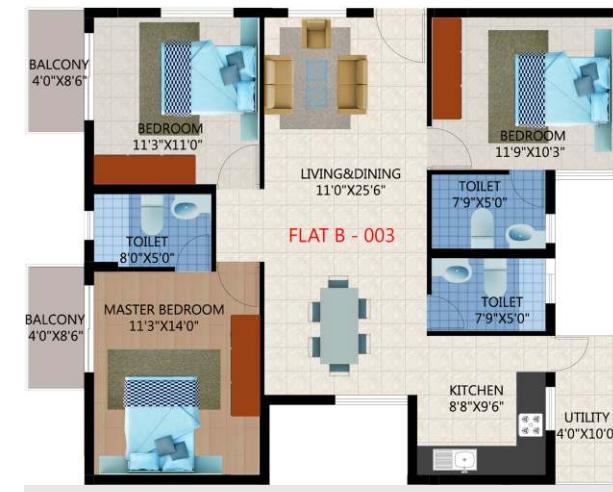
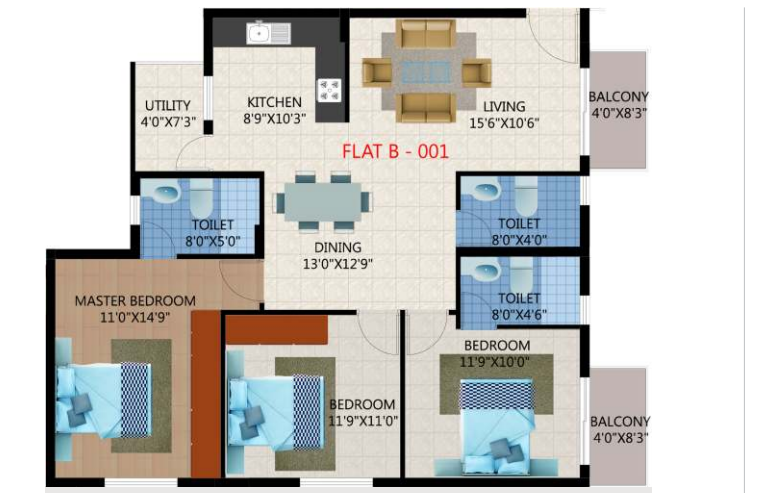
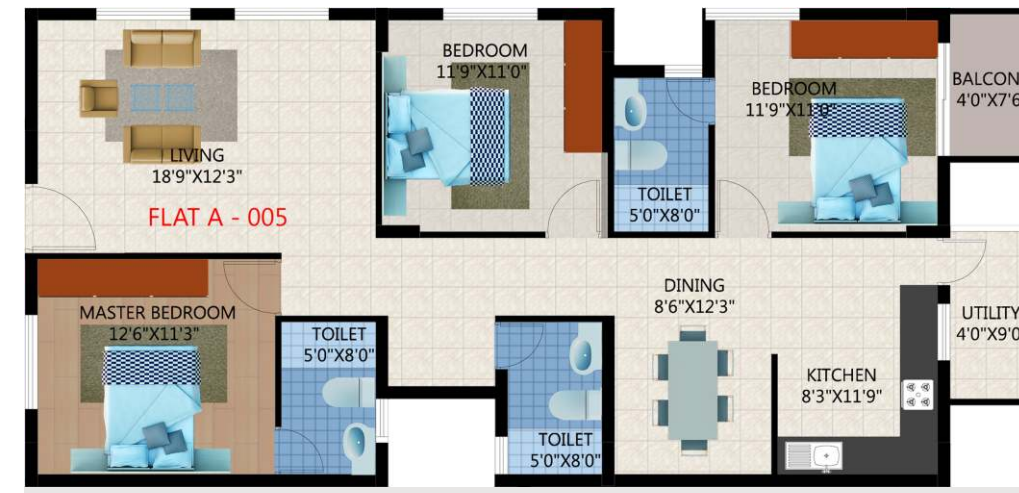
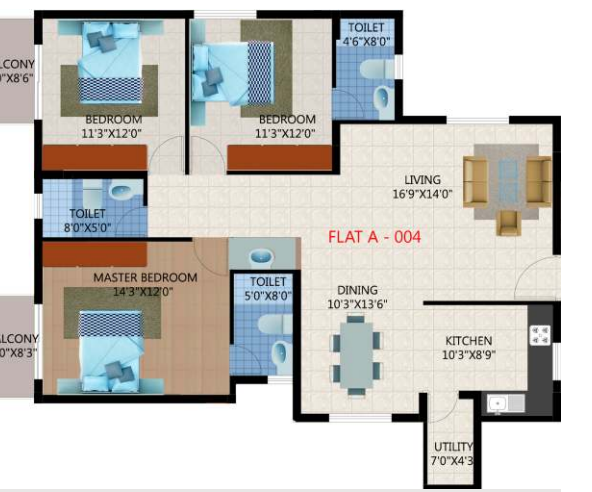
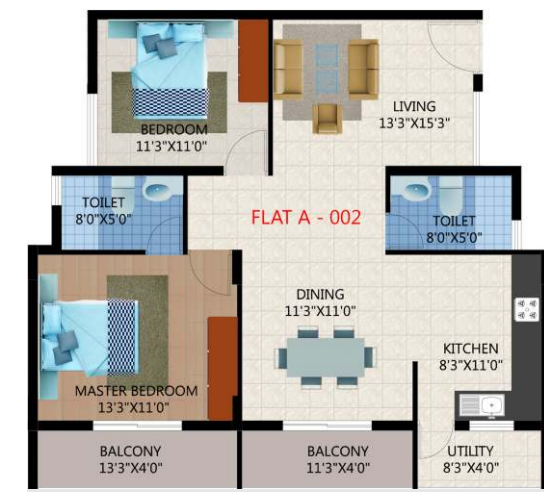
- Blocks: 2 (A & B)
- Floors: 4
- Apartments: 44
- Apts. in each floor: 11
- No. of 2BHK: 20
- No. of 3BHK: 24

As Bangalore's premier development company, Unique Group's focus has always been on building icons that embody innovation and progress, creating a legacy of value for generations to come. Unique Group has successfully completed several landmark projects around Bangalore and is proud to announce another beautiful range of 2/3 bedroom apartments located in one of India's most promising real estate belts – East Bangalore. Closely located to the International Technology Park Bangalore (ITPL), Educational Institutions, Hospitals, Malls, and much more, this beautifully constructed apartments has everything one would desire in a Home. They have been spaciouly designed to ensure maximum convenience, excellent ventilation, sunlight, utilities to give levels of comfort, aesthetics, tranquility and support that are among the best in the world. Like all of its other projects, Unique Eastern Breeze has been planned keeping in mind the little things which make a big difference, the things which convert a house into a loving home.



*Every house where love abides  
And friendship is a quest,  
Is surely home, and home sweet home  
For there the heart can rest.*

- Henry Van Dyke





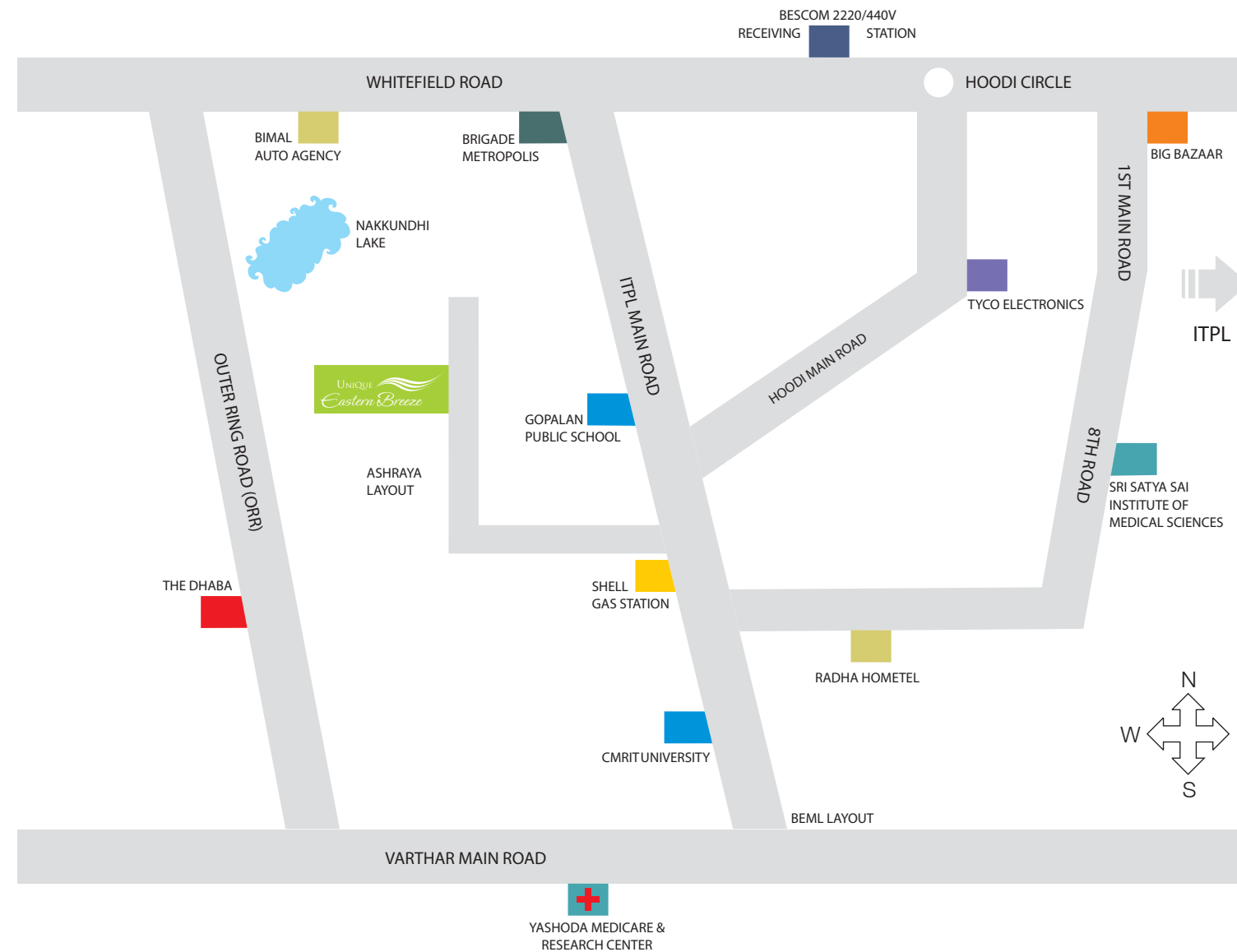
- Swimming Pool
- Fitness Center
- Kid's Play Area
- Landscape
- Pool Tables/Billiards
- Table Tennis
- Intercom Facility
- Backup Generator
- 24/7 Security
- Ample Parking Spaces

## Amenities

Eastern Breeze offers a unique blend of amenities for a peaceful, healthy and a fun filled lifestyle. A beautiful garden for morning and evening walks and a play area for the kids is located on the premises. For the fitness enthusiasts, there's a well equipped fitness center, kids pool, table tennis and pool/billiards tables. Security is provided round the clock to ensure you and your family are safe. A backup generator is available to be used in case of power failures. A kid's play area and ample parking spaces for both 2 & 4 wheelers gives Eastern Breeze, the edge over other apartments. Add to these, the pleasure of community living, where your kids will never run out of friends or opportunities, to care or share.

Just 5 minutes away from ITPL on the Whitefield Main Road will bring you to this lifestyle destination. A home with beautiful surroundings and a neighborhood that is home to open green spaces, lakes and parks, world class educational institutions, museums, hospitals and state of the art shopping malls, for your entertainment and leisure. Located a mere 4 kilometers away is the Information Technology Park (ITPL), home to a number of prestigious IT companies. Public transportation is available through buses on the ITPL Main Road along with the Krishnarajpuram Railway Station located a few kilometers away. Your groceries and shopping necessities can be fulfilled at a host of Malls located in close proximity, Big Bazaar and also the huge array of shopping sites on Whitefield, ITPL and Marathahalli. All in all, a home that you always wanted, at the center of future Bangalore.

## Route Map



Note : This brochure is purely conceptual and is not a legal offering. The promoters / architects reserve the right to add / delete / alter any detail / specification / elevation mentioned herein.

UNIQUE  
*Eastern Breeze*



Unique Infrastructure and Homes Pvt Ltd

Unique Infrastructure & Homes Private Ltd, 34/1, 1st floor, 'G' Block, Sahakarnagar, Bangalore - 560 092

Ph: (080) 41493434/35/36 | Fax: (080) 41493437

Email: info@uniquehomesindia | Web : uniquehomesindia.com

UNIQUE  
*Eastern Breeze*

The next chapter of life begins with

*a Dream you can call Home*

